

# The Exchange

## working with the Whitechurch Network

The Whitechurch Network would like to recommend using The Exchange's Exweb – the most comprehensive online trading portal for the UK financial service industry.

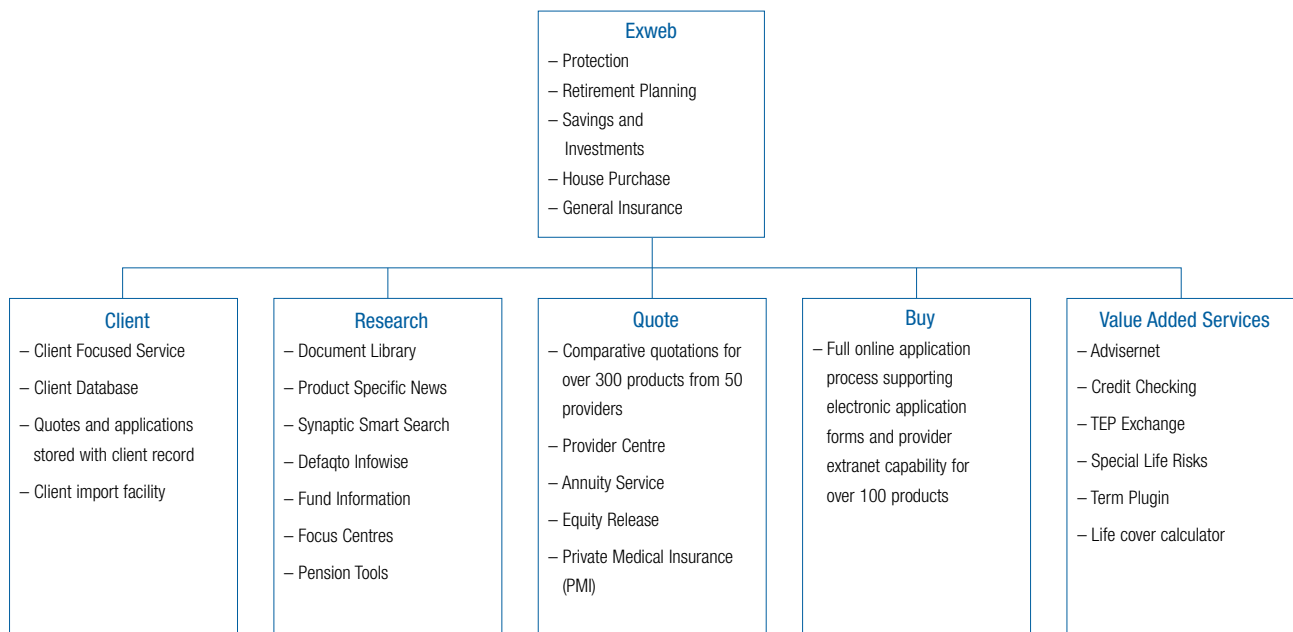
Everyone talks about the importance of increasing business efficiency and how this can lead to more quality time in front of clients. As usual, the key issue is how to turn talk into action – whilst carrying on with the day (and evening!) job. Therefore, the Whitechurch Network has negotiated special deals on your behalf to take advantage of Exweb and other services.

### At a glance:

- Over 300 products from 50 providers
- 85 million quotes processed last year
- 15 free value added services
- Over 21,500 registered users
- 11 chargeable add on services
- Client database and back-office integration

Exweb offers a wide range of product areas including life and health protection, pensions, investments, mortgages and general insurance and, most importantly, is supported by all of the UK's major product providers.

A sample of areas that may be of interest to support and benefit your business is as follows:



### How can Exweb help financial intermediaries?

- **Streamline business processes** – advisers are able to enter information directly into the client database or through their existing back-office system, enabling greater pre-population of data and reducing costs in the sales process
- **Increase profitability** – advisers are able to use Exweb as a single source for quotes and product information for all major providers. This greatly reduces the administrative burden, enabling financial intermediaries to concentrate on developing and maintaining profitable client relationships

# The Exchange

working with the Whitechurch Network

Exweb Broker and Exweb in partnership with full versions Mortgage Brain (MBL) and Trigold

## Special Whitechurch Package Deal

Exweb Broker and MBL or Trigold licences with integration	£24.00 + vat per month per user per licence*
Exweb and MBL or Trigold licences with integration	£29.00 + vat per month per user per licence**
Private Medical Insurance (PMI)	£15.00 + vat per month per user per licence***

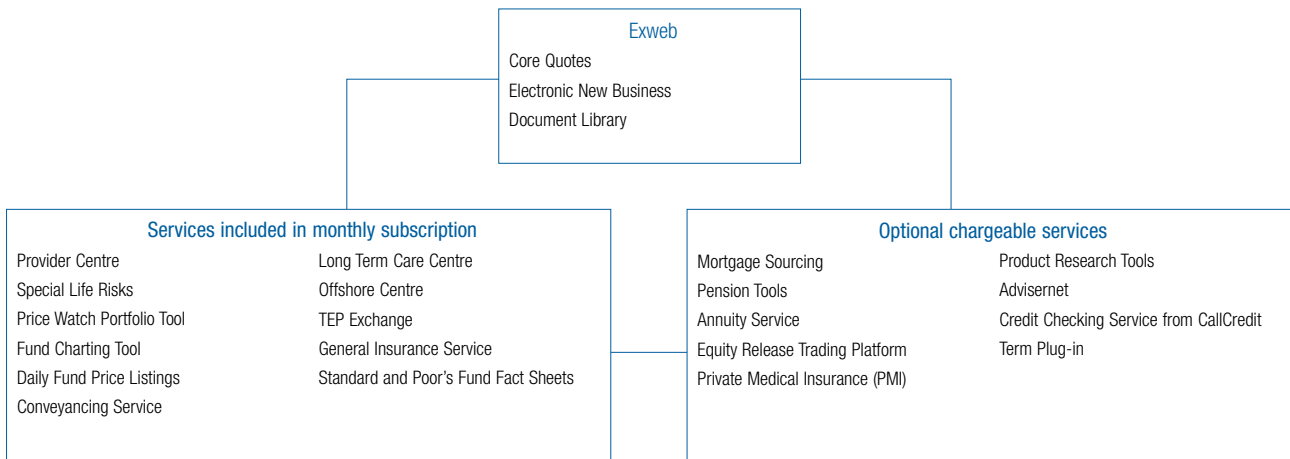
### Exweb Broker

Exweb Broker is a tailored version of Exweb designed for brokers selling mortgages, life protection and general insurance, operating under the FSA's light regulatory status. Exweb Broker contains a range of mortgage services including mortgage sourcing and research, general insurance and credit checking tools, making it the most comprehensive portal in this market.

### Exweb

Exweb is the most comprehensive online trading portal for the UK financial services industry. It covers a wide range of product areas including life and health protection, pensions, investments, mortgages and general insurance and, most importantly, is supported by all the UK's major product providers.

### Exweb value added services



### Online Electronic New Business

Users of Exweb can expect a number of key benefits when transacting business electronically including a choice of how to submit new business, in built validation, offline completion of application forms, easy management of applications and training and helpdesk support if required.

### Next steps

To take up one of the above offers please call the sales team at The Exchange on 01932 586005 and quote the reference WHITECHURCH1.

\* Normally Exweb Broker is £10 and MBL or Trigold subscription is £19.99. This package discounts both to a total of £24, saving the customer £5.99 per month, which over a year is a total of £71.88 (20% saving per year).

\*\* Normally Exweb is £14 and MBL or Trigold subscription is £19.99. This package discounts both to a total of £29, saving the customer £4.99 per month, which over a year is a total of £59.88 (15% saving per year).

\*\*\* Normally Private Medical Insurance (PMI) is £18. This package discounts to £15, saving the customer £3 per month. To access this service you must have an Exweb account.